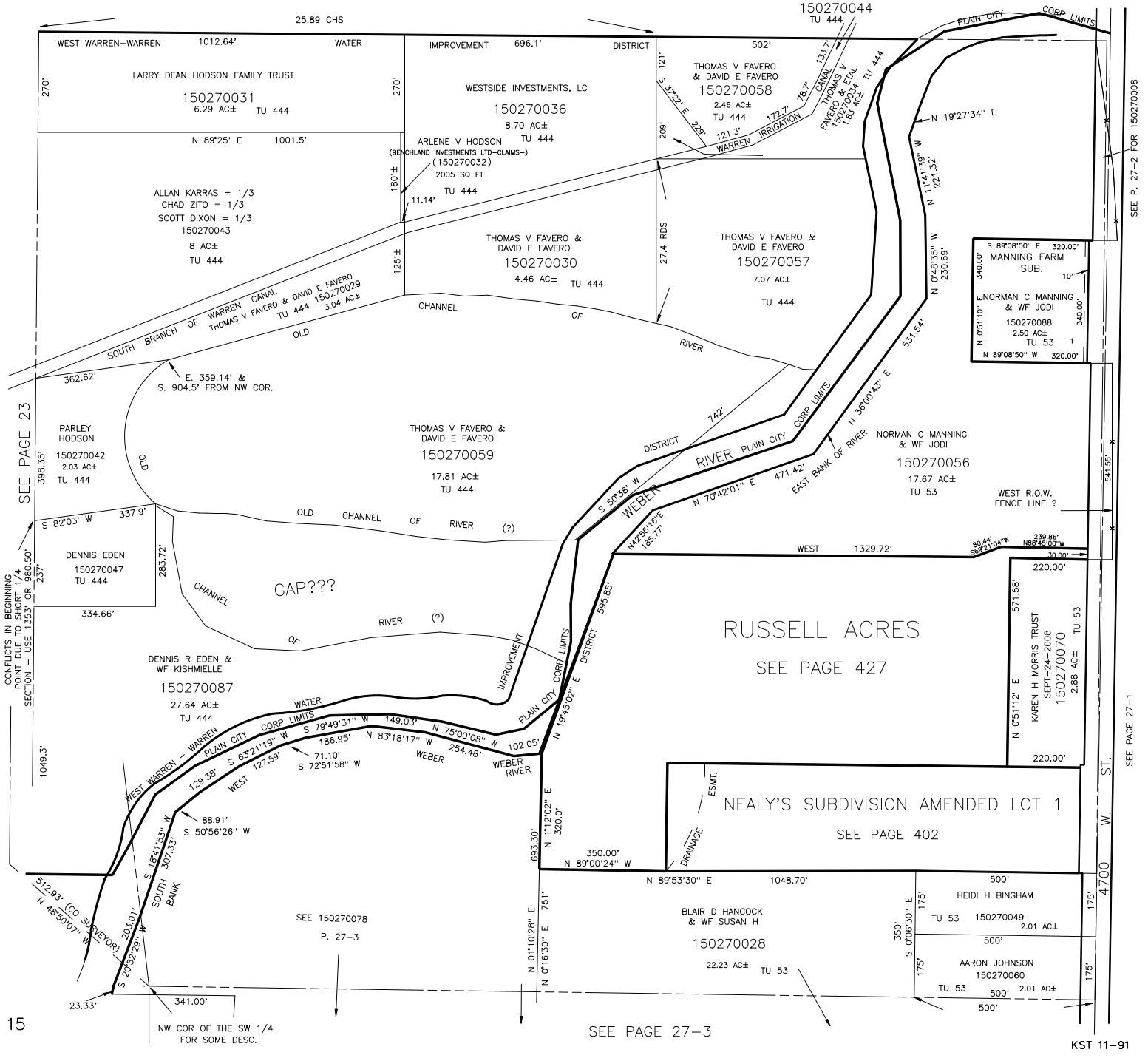


NW 1/4
SECTION 8, T.6N., R.2W., S.L.B. & M.

IN WEBER COUNTY
SCALE 1" = 200'

TAXING UNIT: 53, 444

SEE PAGE 17



SEE PAGE 23
CONVEYS IN BEGINNING POINT TO SECTION 14 USE 1.353' OR 980.50' 2.37'

15

SEE PAGE 27-3

SEE P. 27-2 FOR 150270008

SEE PAGE 27-1

KST 11-91